

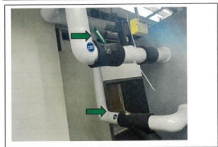


LOCKOUT-TAGOUT PROCEDURE

Developed by:	
Cardinal Compliance Consultants 1135 Corporate Dr. Holland, OH 43528 P: 419-882-9224	
Procedure # 223	
Date: 6/15/23	Origin: 6/15/23

Description: AHU-1A		Location: Plaza 1		Rev: 0	
Facility: Owens-Illinois					

<div style="border: 1px solid black; padding: 5px; display: inline-block;">4</div>	Isolation Points to be Locked and Tagged	NOTES:



ALWAYS PERFORM A MACHINE STOP BEFORE LOCKING OUT DISCONNECTS

Any machine modifications must be shown in procedure. Contact safety department to update procedure.

ID	Source	Device	Location	Method	Check
	480V Electric	Disconnect	Tag #2309	Lock & Tag	Attempt Restart
	480V Electric	PDP-1	Tag #1910	Lock & Tag	Attempt Restart
	10psi Water	Valve	Tag #2307	Cover, Lock & Tag	Check for flow
	10psi Water	Valve	Tag #2308	Cover, Lock & Tag	Check for flow

Safety Is Your Responsibility!

PROCEDURAL LOCKOUT STEPS ON REVERSE SIDE



LOCKOUT-TAGOUT PROCEDURE

Developed by: Cardinal Compliance Consultants 1135 Corporate Dr. Holland, OH 43528 P: 419-882-9224
Procedure # 223
Date: 6/15/23 Origin: 6/15/23

Description: AHU-1A

Facility: Owens-Illinois

Location: Plaza 1

Rev: 0

Date: 6/15/23

Origin: 6/15/23

SHUTDOWN SEQUENCE

1	Notify	Notify all affected employees that the machine or equipment will be shut down and locked out.
2	Machine Stop	Shut off machine and wait for machine to fully stop.
3	Isolate	Turn off disconnect tag #2309 and #1910. Close valves tag #2307 and #2308.
4	Lock-Out	Apply appropriate lock out devices, locks and properly filled out tags
5	Verify Devices	Attempt to remove lock or device from lock-out point to verify effectiveness.
6	Dissipate Energy	Dissipate or restrain stored or residual energy.
7	Attempt Restart	Ensure no personnel exposure, then, if applicable, attempt to restart machine or equipment.

Restore to Service Sequence

1	Inspect	Remove any non-essential items from machine and re-install any safeguards.
2	Check Area	Check the area to ensure all employees have been safely positioned or removed from the area.
3	Verify	Verify machine controls are in neutral or "off" position.
4	Remove Locks	Remove lockout devices, locks, and tags.
5	Energize	Energize machine.
6	Set Parameters	Set machine or equipment to standard operating parameters.
7	Notify	Notify affected employees that maintenance is complete, and isolations have been removed.

Only Authorized Personnel are to use Lockout-Tagout!

Lockout Procedure Approval Data:

The signatures below indicate that the lockout procedure covered on this sheet has been prepared by Cardinal Compliance and approved by Owens-Illinois.

Completed by:

Jacob Meek
Cardinal Compliance
Consultants, Inc.

Approved by:

Josh Warner
Owens-Illinois.

Date: 6/15/23