
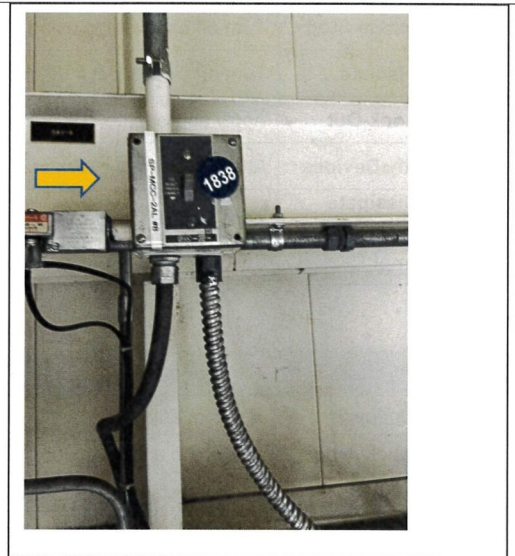
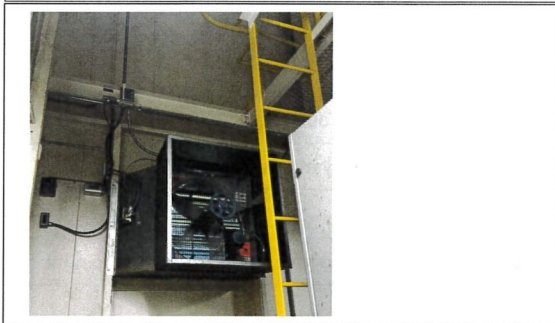


LOCKOUT-TAGOUT PROCEDURE

Developed by:	
Cardinal Compliance Consultants 1135 Corporate Dr. Holland, OH 43528 P: 419-882-9224	
Procedure # 37	
Date: 9/20/22	Origin: 9/20/22



Description: Exhaust Fan		
Facility: Owens-Illinois	Location: Boiler Room	Rev: 0
Date: 9/20/22		Origin: 9/20/22

2		Isolation Points to be Locked and Tagged	NOTES:
			See other for thermostat.



ALWAYS PERFORM A MACHINE STOP BEFORE LOCKING OUT DISCONNECTS

Any machine modifications must be shown in procedure. Contact safety department to update procedure.

ID	Source	Device	Location	Method	Check
	Electrical 240 V	Disconnect Tag #1838	On wall above unit	Lock and tag	Attempt restart
	Electrical 240 V	Disconnect Tag #1878	On wall	Lock and tag	Attempt restart

OPENING A GUARD DOES NOT CONSTITUTE A LOCKOUT

Safety Is Your Responsibility!

PROCEDURAL LOCKOUT STEPS ON REVERSE SIDE



LOCKOUT-TAGOUT PROCEDURE

Developed by:
Cardinal Compliance Consultants 1135 Corporate Dr. Holland, OH 43528 P: 419-882-9224
Procedure # 37
Date: 9/20/22 Origin: 9/20/22

Description: Exhaust Fan	Location: Boiler Room	Rev: 0
Facility: Owens-Illinois		

SHUTDOWN SEQUENCE

1	Notify	Notify all affected employees that the machine or equipment will be shut down and locked out.
2	Machine Stop	Turn off exhaust fan using disconnect tag #1838.
3	Isolate	Turn off disconnect #1878 located on wall.
4	Lock-Out	Apply appropriate lock out devices, locks and properly filled out tags.
5	Verify Devices	Attempt to remove lock or device from lock-out point to verify effectiveness.
6	Dissipate Energy	Dissipate or restrain stored or residual energy.
7	Attempt Restart	Ensure no personnel exposure, then, if applicable, attempt to restart machine or equipment.

Restore to Service Sequence


1	Inspect	Remove any non-essential items from machine and re-install any safeguards.
2	Check Area	Check the area to ensure all employees have been safely positioned or removed from the area.
3	Verify	Verify machine controls are in neutral or "off" position.
4	Remove Locks	Remove lockout devices, locks, and tags.
5	Energize	Energize machine.
6	Set Parameters	Set machine or equipment to standard operating parameters.
7	Notify	Notify affected employees that maintenance is complete, and isolations have been removed.

Only Authorized Personnel are to use Lockout-Tagout!

Lockout Procedure Approval Data:

The signatures below indicate that the lockout procedure covered on this sheet has been prepared by Cardinal Compliance and approved by Owens-Illinois.

Completed by: 
Mike Yates
Cardinal Compliance
Consultants, Inc.

Approved by: 
Josh Warner
Owens-Illinois

Date: 9-27-22